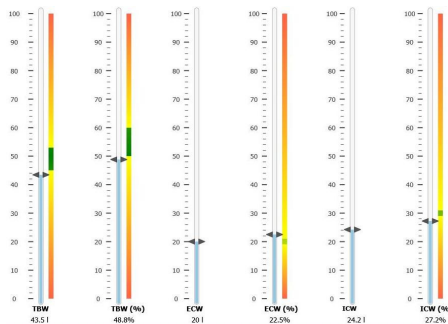
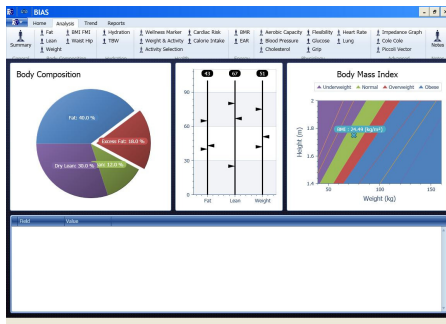


An excellent way of recording your Clients body composition!




Bodystat[®]

CHALLENGING
ATTITUDES TO HEALTHCARE

Est. 1990

CONGRATULATIONS!

In purchasing your new Bodystat unit you are joining one of the millions Worldwide using Bioelectrical Impedance Analysis technology. In this leaflet you will find the information that you require to start to use your device immediately. However, we do strongly recommend that you make yourself familiar with the Users Manual, that you will find inside this package.

Bodystat Thermal Printer

A compact handheld device that allows you to give your client an instant print out of their test results.

Useful to give clients something tangible to take away with them to study, or to store in your files.

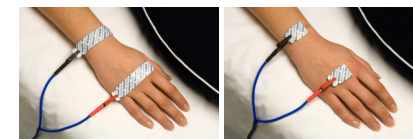
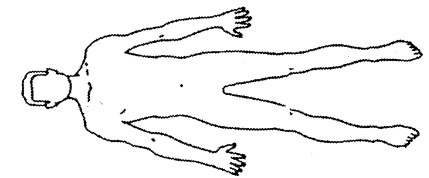


Step 1:

Ensure you have the EXACT weight and height.

Step 2:

Lay the subject down for between 3 to 5 minutes, ensuring that no parts of the body are touching.



Step 3: Electrode Placement

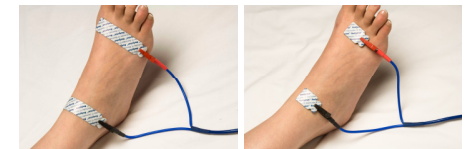
Right Hand: **Red Lead**, Behind the knuckle of the middle finger.

Black Lead, on the wrist next to the ulna head.

Step 4: Electrode Placement

Right Foot: **Red Lead**, behind the 2nd toe next to the big toe.

Black Lead, on the ankle at the level of and between the medial and lateral malleoli (the large protruding bones on the side of the ankle).



Correct placement of the electrodes is essential.



www.bodystat.com
info@bodystat.com

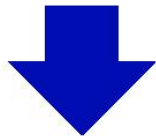
The Control Panel



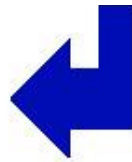
On / OFF



Up Arrow Increases or
changes a value



Down Arrow;
Reduces or
changes a value



Enter Key;
Accepts a value or
action

Performing the test

Step 5:

Switch the device On



Step 6:

Key in the required data using the up and down arrow keys, pressing enter to confirm and move on to the next section.

Step 7:

Key in the required data using the up and down arrow keys, pressing enter to confirm and move on to the next section.



Additional information



To Recall Data



Hold down the 'Enter' key and then switch the device On



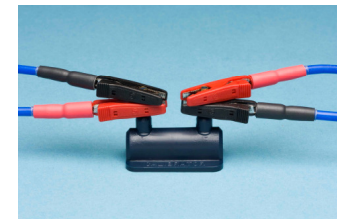
'Recall Data' will be displayed followed by 'Select Test Number'



Use the 'Up' and 'Down' arrow keys to choose the correct test, then press 'Enter' to select

To Check Calibration

Attach the lead wires to the Calibration Block and test as normal. The Impedance results should read between 496 and 503.



To obtain the Serial Number



Hold down the 'Down Arrow' key and then switch the device On
'Serial Number' and year of manufacture will then be displayed.



BATTERIES

Only Duracell or Procell batteries are recommended.

Battery Specification:

AA Type LR6 batteries, Alkaline 1.5V. MN1500.

Do not use rechargeable batteries.



Finished?

Ensure you look after your lead wires. Do not wrap them around the device, this will cause damage. Remove the lead wires after each test, coil and place securely away.